



NadieMeLlamaGallina.com

Porque Yo Lo Reparo

Step by step tutorial: of Meizu MX6 Motherboard

For this tutorial you will need the following spared parts and tools that you cant get at our online store Impextrom.com
Click on a tool for visit the website.



BK-7275 (A Version)
5 in 1 screwdriver

6,41 €



Opening tool
Smartphone, tablet

2,19 €



Pinza antiestática
ESD redondeada

3,06 €



Set of professional
tools for opening
smartphones and
tablets

18,97 €



Touch ESD glove, for
antistatic protection,
size M

4,16 €



Antistatic and ESD
tactile glove, size S

5,30 €

Step 1 - Remove screws and SIM / SD tray

We will start by removing the back cover. To do this, we will have to remove the two Pentalobe 0.8 screws (TS1) that hold the housing at the bottom.

We will also remove the SIM / SD tray.





Step 2 - Unpin housing

We introduce an opening tool between the casing and the frame, carefully prying it off.

Before separating it, we will have to disconnect the flex from the fingerprint sensor and the one from the screen.





Step 3 - Disconnect fingerprint sensor

Now we remove the Phillips screw (PH # 00) that holds the shield and remove it to disconnect the sensor.





Step 4 - Disconnect screen

We take out the three Phillips screws (PH # 00) that hold the shield that covers the screen connector and move it away. Now we can disconnect the screen and remove it.

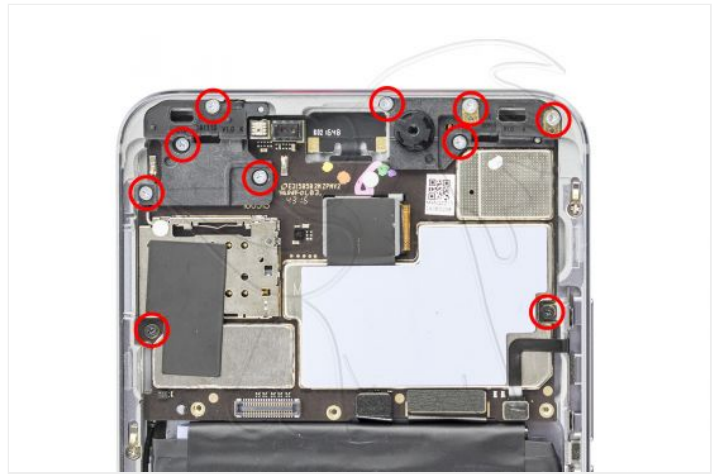




Step 5 - Removing the motherboard

To remove the plate, we disconnected the push buttons, the interconnection and the battery flexes. Then we remove the ten Phillips screws (PH # 00) that hold the plate to the chassis and disengage it. Before removing it, we will disconnect the coaxial antenna cable.





Step 6 - Motherboard

Now all we have to do is disconnect the cameras from the motherboard.

