



**NadieMeLlamaGallina.com**

Porque Yo Lo Reparo

## Step by step tutorial: of Samsung Galaxy Tab Active Auxiliary board with USB connector

For this tutorial you will need the following spared parts and tools that you cant get at our online store [Impextrom.com](http://Impextrom.com)  
Click on a tool for visit the website.



Auxiliary board with microphone, charging connector, data and accessories

3,38 €



Heat-opening thermal mat, CPB320

69,61 €



10pcs Anti-static Rubber ESD Finger Cots

2,68 €



Professional disassembly spatula for mobile phones and smartphones

2,71 €



Opening tool Smartphone, tablet

2,19 €



Anti-static tweezer tips VETUS ESD-249

4,74 €



Special SAT 0.70mm PET pick, high friction and resistance

1,25 €



2.2" suction cup for disassembling smartphones

4,66 €

## Step 1 - Samsung Galaxy Tab Active

### Specifications

**Dimensions** : 213.1 x 126.2 x 9.75 mm

**Weight** 393 g

**SoC** : Qualcomm Snapdragon 400 APQ8026

**Processor** : ARM Cortex-A7, 1200 MHz,

**Number of cores** : 4

**Graphics processor**: Qualcomm Adreno 305,

**Number of cores**: 1 RAM memory: 1.5 GB

**Internal memory** : 16 GB

**Memory cards**: microSD, microSDHC, microSDHC

**Display** : 8 in., TFT, 1280 x 800 pixels, 24 bit

**Battery** : 4450 mAh, Li-ion (lithium ion)

**Operating system** : Android 4.4.4 KitKat

**Camera** : 2048 x 1536 pixels, 1280 x 720 pixels, 30 fps Wi-Fi: a, b, g, n, Dual band, Wi-Fi Hotspot, Wi-Fi Direct

**USB** : 2.0, Micro USB

**Bluetooth** : 4.0

**Location / Navigation** : GPS, A-GPS, GLONASS

Before starting, make sure the tablet is turned off.



## Step 2 - Back cover

Remove the back cover with an opening tool, starting from the opening.





### Step 3 - Battery

Remove the battery by pulling on the bottom.





#### Step 4 - screen

The screen is attached to the chassis by a strip of adhesive that runs all the way around. To detach it we will apply heat to soften the adhesive and to peel off easily.

In this guide we use a thermal mat, which we will adjust between 80 and 100 °C. Warm the surface of the screen at this temperature for about 40 seconds.

While holding the screen with a suction cup, insert a prong or other opening tool between the glass and the frame.

Step around the contour with the quill bit by bit to release the adhesive.







## Step 5

The screen is linked by the data flexes, do not pull it or it could damage them.

apply heat again.



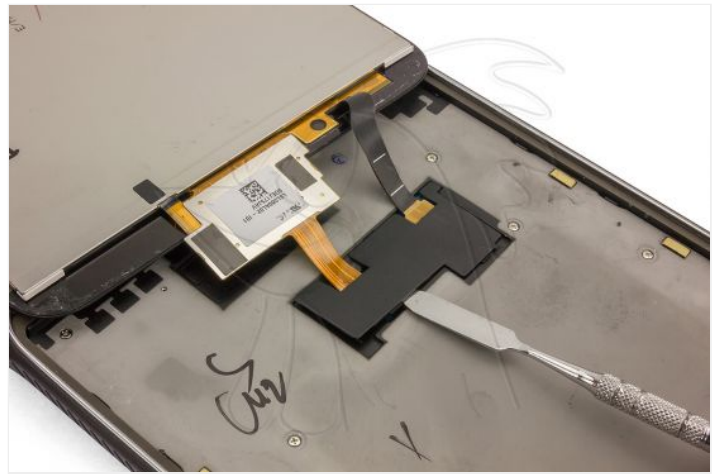


## Step 6

Remove the plastic cap that covers the connectors.







## Step 7

Disconnect the data flexes to separate the screen.

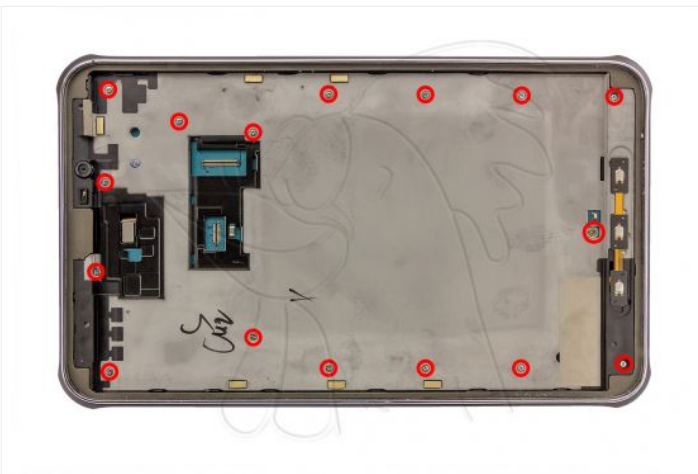






## Step 8 - Screws

Remove the 16 PH00 Phillips screws from the front and 2 more at the bottom back.





### Step 9 - Flex inferior

Remove the plastic cap that covers the lower flex.

Disconnect the lower flex.





## Step 10 - Chassis

Separate the chassis from the intermediate housing by prying it gently with the opening tool.

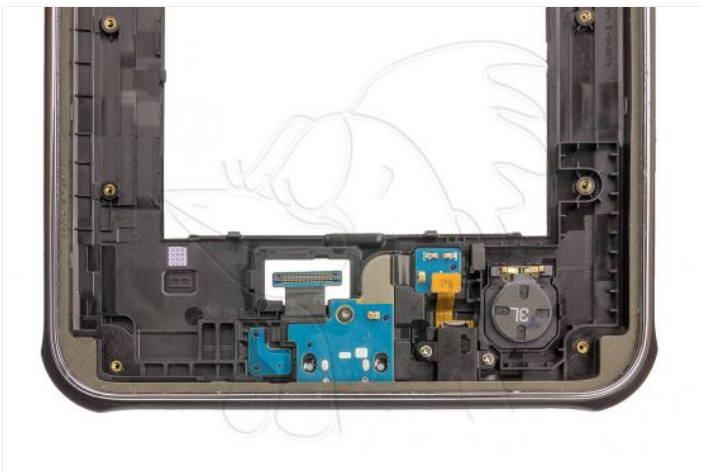






## Step 11 - Auxiliary plate

Disconnect the flex from the audio connector and remove the Phillips PH0 screw.



## Step 12

Separate the auxiliary plate next to the plastic support.



## Step 13

Finally, remove the plate from the plastic holder with a spatula.

