



Step by step tutorial: of LG Optimus L7 II Tecla home.

For this tutorial you will need the following spared parts and tools that you cant get at our online store Impextrom.com
Click on a tool for visit the website.

Step 1 - Battery cover

To open the battery cover, you can use a tine or an opening tool. This will avoid damaging the casing.



Step 2 - Battery

Remove the battery by pulling from the bottom.



Step 3 - SIM and microSD cards

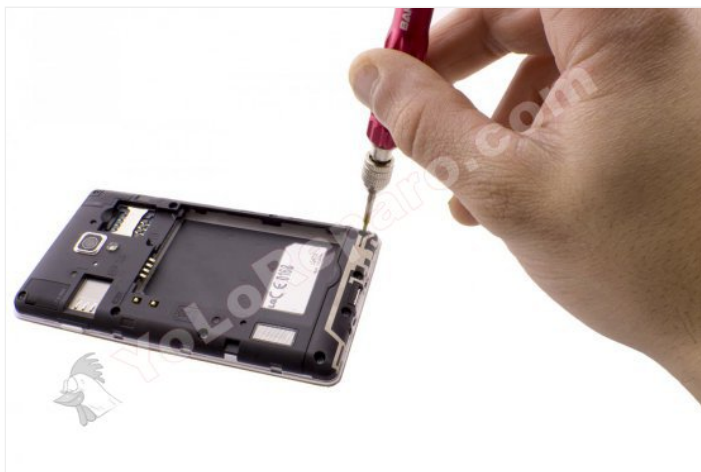
Remove the SIM and microSD cards.





Step 4 - Housing screws

Remove the 11 Phillips screws that hold the housing.



Step 5 - housing

Separate the casing from the rest. To do this, insert a tine into the joint and move it to release the housing.

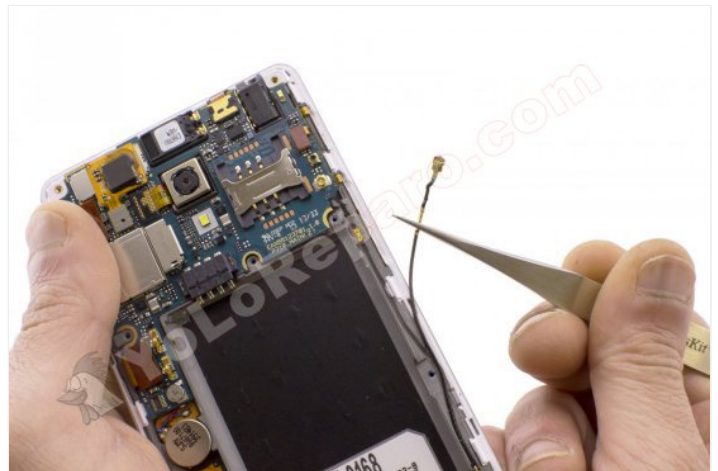




Step 6 - Cable coaxial.

Disconnect the coaxial cable from both ends.

Do not pull the cable, release the connector carefully.



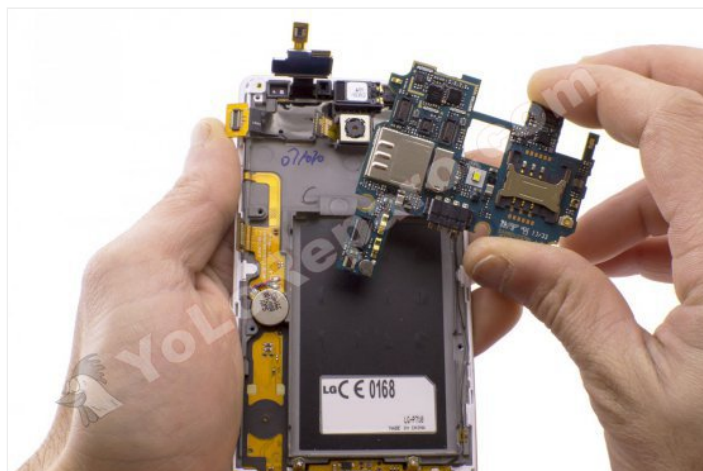
Step 7 - Motherboard connections.

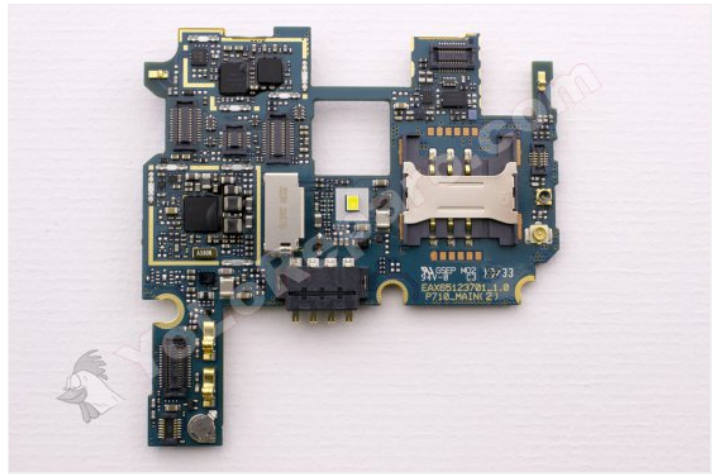
Disconnect the data cables to release the motherboard.



Step 8 - Motherboard

Remove the motherboard.





Step 9 - Bottom module

Remove the two lower screws.



Step 10 - Power button.

Carefully peel off the power button.





Step 11

Take off by gently pulling the flex circuit.

If you heat the area with the HOT GLASS, it will detach more easily.



Step 12 - Tecla home.

Replace the "Home" key.

