



**NadieMeLlamaGallina.com**

Porque Yo Lo Reparo

## Step by step tutorial: of HTC Desire 500 Frontal camera

For this tutorial you will need the following spared parts and tools that you cant get at our online store [Impextrom.com](http://Impextrom.com)  
Click on a tool for visit the website.



Terminal opening  
tool, plastic

0,71 €



Professional fine  
point tweezers, ST-10

3,17 €

### Step 1 - Battery cover

Remove the equipment from the outer casing with the opening tool from the front.



## Step 2



## Step 3 - Battery

Remove the battery by pulling on the bottom.





#### Step 4 - SIM cards

Push the SIM card with your finger to eject it.





## Step 5 - Micro SD card

Pull the micro SD card to eject it.



## Step 6 - Housing screws

Remove the 8 Torx screws. One of them is hidden under a sticker with the text: "VOID".





## Step 7 - Housing.

Remove the black cover stuck to the top of the battery gap.



## Step 8

Release the plastic hooks using the opening tool.



## Step 9

Shut off the casing.



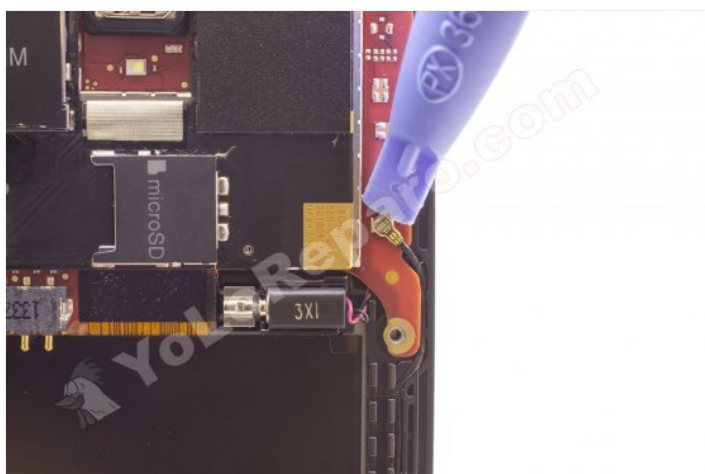




## Step 10 - Cable coaxial

Disconnect the coaxial cable from both ends.

Pull it to remove it from the housing.



## Step 11 - Bottom plate.

Remove the load connector bracket. This is fastened by two Torx screws.



## Step 12

Peel off the lower plate, it will continue to be held by the flex cable connector.





## Step 13

Separate the lower plate by disconnecting the flex cable.



## Step 14 - Stickers and protectors.

Peel off the sticker with the serial number and IMEI of the equipment.





## Step 15

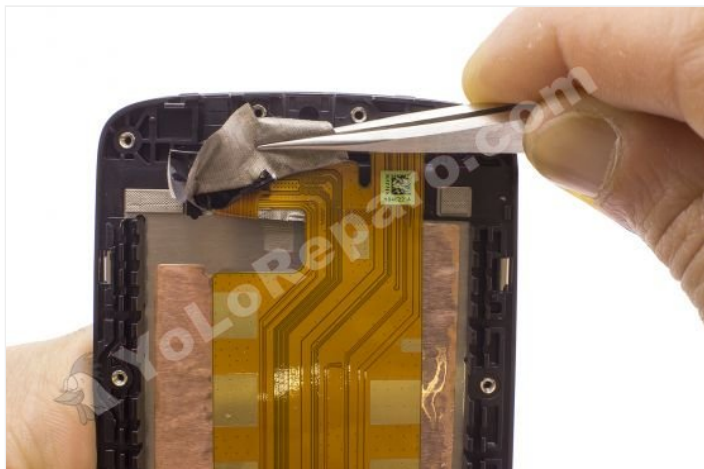
Peel off the second adhesive covering the interconnecting cable between the plates.





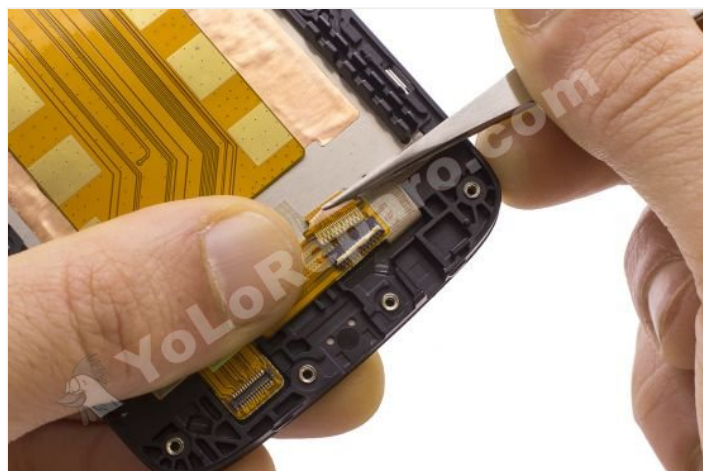
## Step 16

Remove the adhesive covering the lower connector.



## Step 17

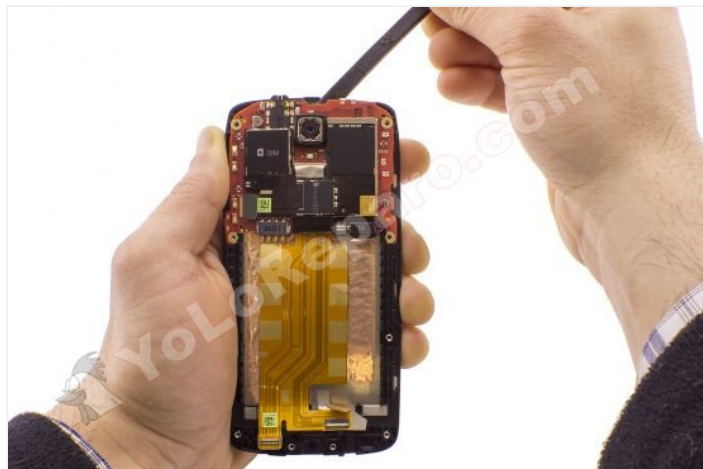
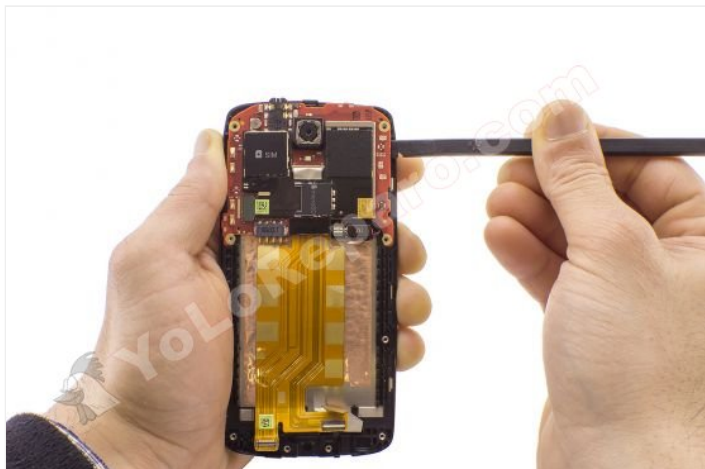
Press the connector clip and pull the flex cable to disconnect it.





## Step 18 - Motherboard

Separate the base plate from the housing a few centimeters on the right side.



## Step 19

Disconnect the vibrator cable from the motherboard.



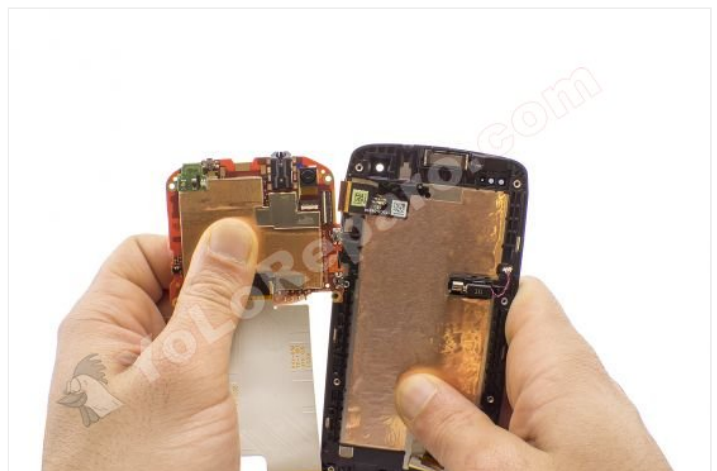
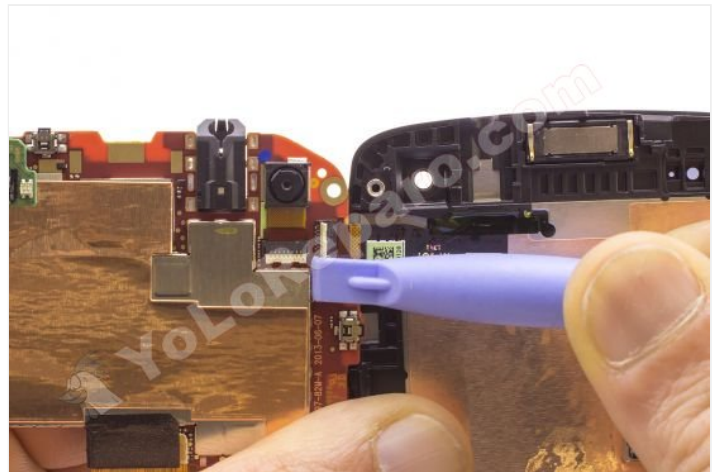
## Step 20

Separate the plate on the right side. This will continue to be held on the opposite side by the screen's data flex.



## Step 21

Operate the connector clip and pull the plate gently to snap it off.



## Step 22 - Frontal camera

To remove the front camera, press the connector clip and pull it out.

