



NadieMeLlamaGallina.com

Porque Yo Lo Reparo

Step by step tutorial: of Samsung Galaxy Alpha Rear camera

For this tutorial you will need the following spared parts and tools that you cant get at our online store Impextrom.com
Click on a tool for visit the website.



Flex with camera back of 12 Mpx for Samsung Galaxy Alpha, G850F

2,51 €



Head made of synthetic carbon steel with titanium handle

18,63 €



Screwdriver with 8 heads Peng Fa 7339A

6,96 €



Opening tool Smartphone, tablet

2,19 €



Terminal opening tool, plastic

0,71 €



Special SAT 0.75mm high friction PVC pick

1,07 €



Electrical dissipating clamps, in blister

3,97 €

Step 1 - Samsung Galaxy Alpha

Characteristics:

Dimensions: 132.4 x 65.5 x 6.7 mm, 115 grams.

Display: 4.7 inches SuperAMOLED.

Resolution: 720 x 1280 pixels (312 ppi).

Processor: Exynos, octa-core at 1.3 GHz.

RAM: 2 GB.

Memory: 32 GB not expandable with microSD.

Operating System: Android 4.4.4 (KitKat) with TouchWiz layer.

Connectivity: LTE, NFC, WiFi 802.11ac, BT 4.0 LE, USB 3.0, IR port.

Cameras: 12MP rear camera 2160p @ 30fps, front camera 2.1MP 1080p @ 30fps.

Battery: 1,860 mAh.



Step 2 - Back case

We start by removing the back cover for what we will use a plastic opening tool. Inserting it between the casing and the frame we can go separating them.

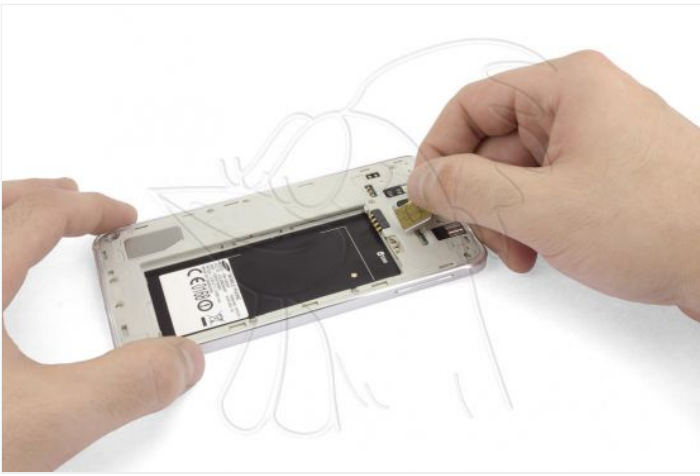


Step 3 - Battery and SIM card

We will remove the battery helping us with the opening tool.

If it costs us to remove the SIM card we can push it with a tool.





Step 4 - Intermediate housing screws

In this step we simply remove the twelve Phillips screws (PH # 00) that hold the housing to the phone's chassis.



Step 5 - Heat screen

In this step we will need to heat the glass to soften the glue and thus be able to remove the screen more easily.

Below we will see two ways to perform this step.

We will use a high thermal retention blanket (HOT GLASS) to heat the glass.

Insert the HOT GLASS in the microwave for the time specified in the instructions.

To heat it evenly, it is necessary to interrupt the microwave every 30 seconds to distribute heat throughout the HOT GLASS with your hands.

The gun emits VERY hot air, use with caution.

We recommend the use at minimum power and short bursts, since excess heat can damage the equipment.

Warm the screen to soften the glue and be able to easily peel it off.





Step 6 - Take off screen

With the hot screen, we will introduce a prong between it and the frame to take them off.





Step 7 - Intermediate housing

Taking advantage of the battery gap, we will introduce an opening tool between the chassis and the housing to separate them.





Step 8 - screws and components

In this step we will start by removing the screw that holds the motherboard. After removing it, we will take off the volume buttons flex of the chassis and the same will do with the flex of the power button, although this can be disconnected.

We will also disconnect the flex with headphone, audio connector, etc. that we show in the photos.





Step 9 - Removing the motherboard

We continue disconnecting the components to be able to remove the motherboard. In this step we disconnect the flex from the home button, the flex with antenna connectors and the antenna cable.

Now we can separate the plate but we will have to disconnect the flex from the bottom plate first.





Step 10 - Rear camera

To finish we only have to disconnect the camera from the board.

